

## Gare de Lyon

If you are catching a train from Gare de Lyon, or nearby Gare d'Austerlitz across the Seine, and have some time free, why not go for a wander? There is plenty to see and do.

At Gare de Lyon, baggage lockers are available every day (including public holidays) from 6:15 am to 10pm - Hall 3.



## Strolls

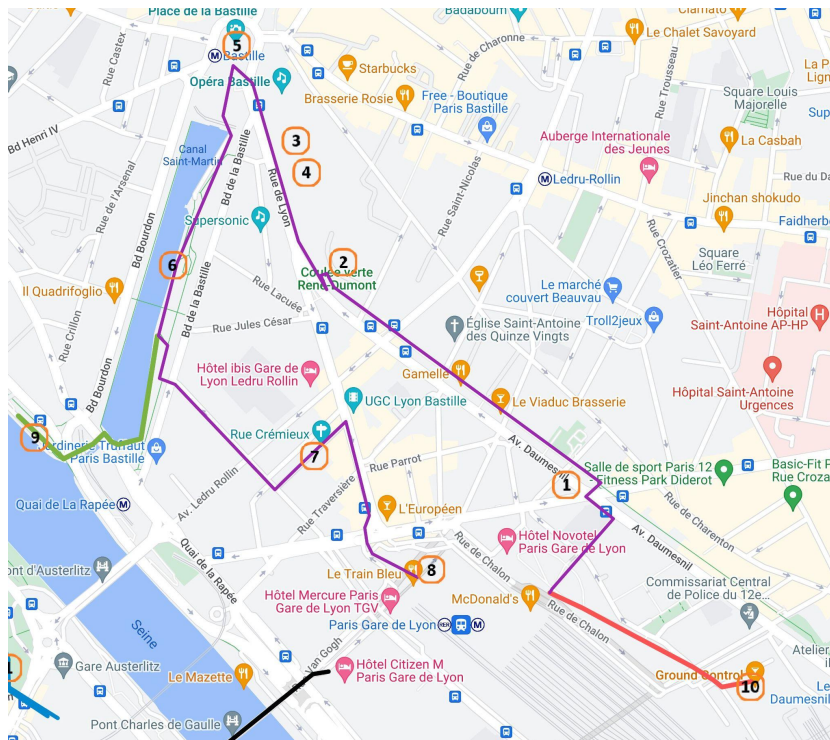
- [A stroll around Gare de Lyon \(3km purple\)](#)
- [Park Bercy and a swim? \(2km orange\)](#)

## Interactive Map

Here is a [link to a map](#) that can help you find your bearings.

## A stroll around Gare de Lyon (3km purple)

Here's a chance to get an elevated view of this part of Paris and walk along a railway line where the main traffic seems to be joggers and parents and nannies shunting pushchairs.



- 1 Access to Coulée Verte
- 2 Début de la coulée verte
- 3 Opéra Bastille
- 4 Grand Palais Immersif
- 5 Place de la Bastille
- 6 Paris Arsenal Port
- 7 Instagram - Rue Crémieux
- 8 Le Train Bleu
- 9 Seine
- 10 Ground Control
- 11 Parc de Bercy
- 12 Joséphine Baker Pool
- 13 City of Fashion and Design

Leaving the station on the north side, cross Place Henri Frenay, go through the archway and walk along Rue Guillaumot. You will see railway arches in front of you. The railway line has now been replaced by an elevated park - the Coulée Verte René-Dumont (1). Turn left and there's a staircase up to it on the far side of the road junction between Avenue Daumesnil and Boulevard Diderot.

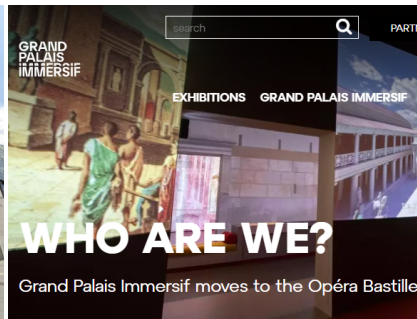


*Coulée Verte René-Dumont*

Wander the length of the line, which used to end at the Bastille but now stops a bit short (2). Come down the steps and continue along the Rue de Lyon past a building on your right which, despite the corporate office meets Westfield shopping centre vibes, is actually the home of the [Opéra Bastille](#) (3). The building also contains the [Grand Palais Immersif](#) (4), where you could have an immersive somewhere else experience, such as walking around Venice.



*Opéra Bastille - google*



*Grand Palais Immersif*



*Bastille - google*

Continue to the spacious square of the Bastille, where the prison used to be and is now marked by the green-tinted 'Colonne de Juillet' (5). Turning back and avoiding the skateboarders, take the steps down to the Bassin de l'Arsenal, which is where the Canal Saint-Martin re-emerges (6) and choose which boat you would like to live in.

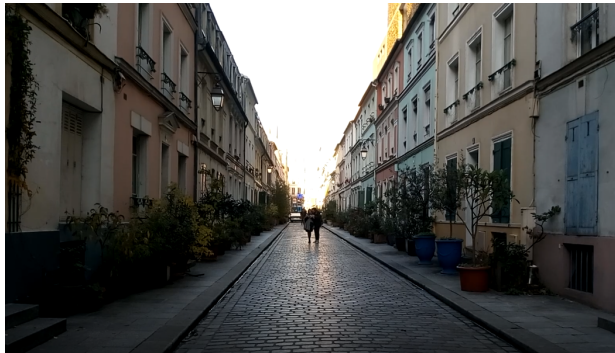
Walk along the quay and about 3/4 of the way along you have a choice, you can either take the steps up and go back towards the station, or have a low-level peek at the

Seine. To take a peek, walk all the way to the end and cross the canal entrance on the little bridge and take the cut through to the quayside (marked in green) (9).

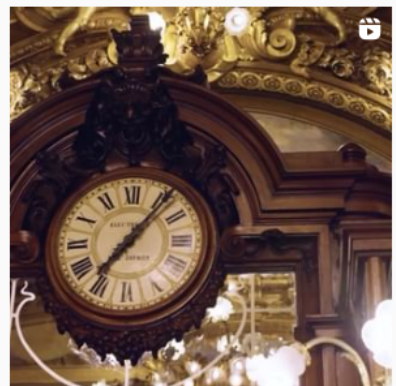
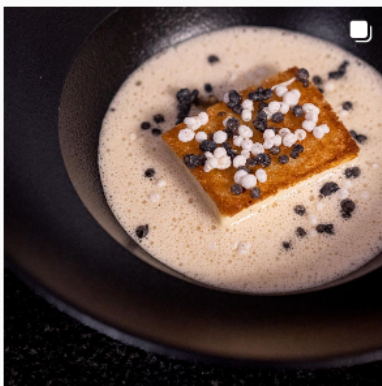
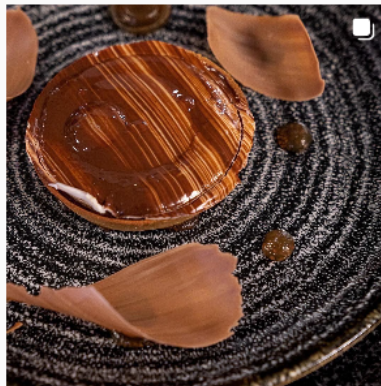
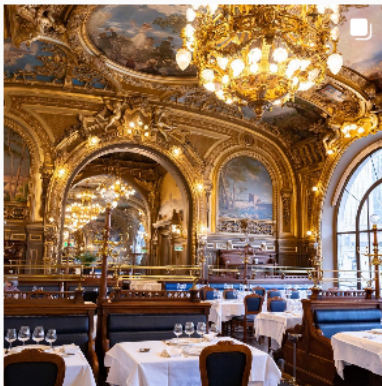


*Porte d'arsenal to Seine*

Otherwise, take the steps back up to the Boulevard de la Bastille, cross the road and then walk down the Rue de Bercy. After about 250m you'll pass a photogenic street on your left which has become a big feature on Instagram - the Rue de Crémieux (7).



Continue back to the station and if there's time, why not get a drink at the opulent [Train Bleu](#) (8)?

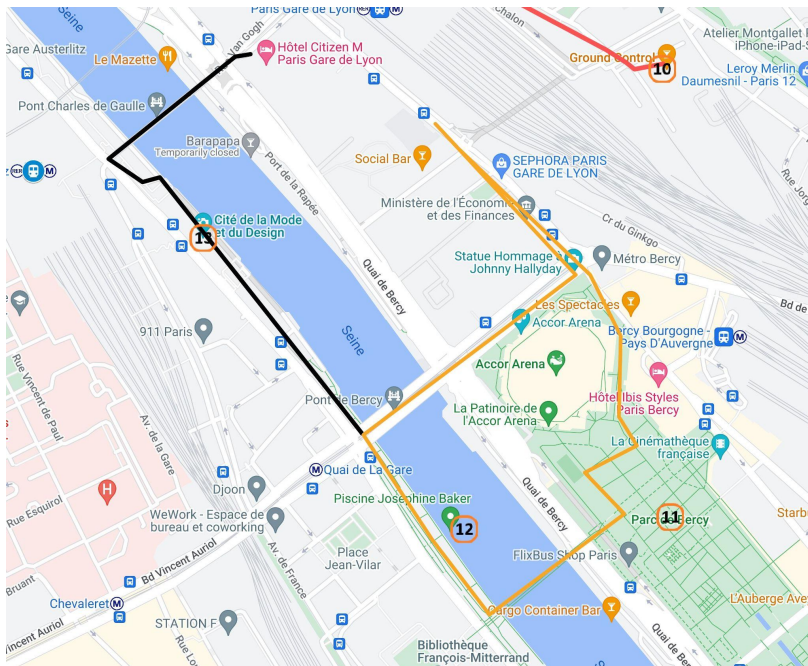


Or you may prefer to grab a bite, or drink, from an Ecotable at [Ground Control](#), a former postal sorting hall which has been transformed into a cultural space and which gets its name from David Bowie (see red route) (10).



## Park Bercy and a swim? (2km orange)

This quirky little route may not be through the most beautiful part of Paris, but it has charm of its own. The [Parc de Bercy](#) with the mix of loafing locals and tourists waiting to catch a train or coach, the Seine with Parisians powering through their lengths in the [Piscine Josephine Baker](#). If you have some swimwear, why not join them?



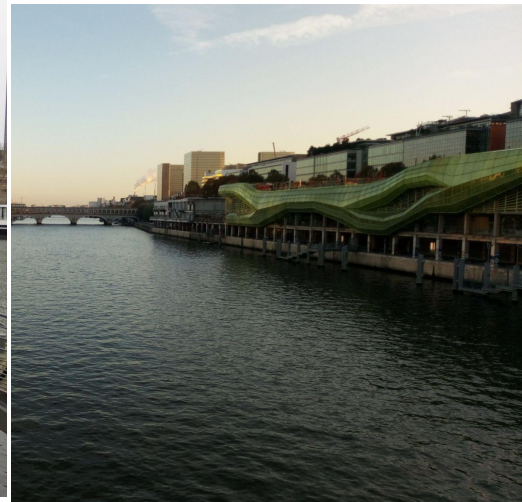
Leave the station and go left and continue along Rue de Bercy until you get to the large [Parc de Bercy](#) (11). The park occupies the site of a former wine depot, and has three gardens - the 'Romantic Garden' (Jardin Romantique - secret gardens, fishponds and sand dunes), 'Flowerbeds' (Les Parterres - 9 smaller gardens including a rose garden, kitchen garden, vineyard and labyrinth) and 'The Meadow' (La Grande Prairie). You can cross the Seine using the footbridge, 'Passerelle Simone-de-Beauvoir'.

This takes you to a series of barges. One of them holds water - the [Piscine Josephine Baker](#) (12). You can have a swim here (remember to pack your swimwear), which is about the closest you'll get to swimming in the Seine.



*Piscine Josephine Baker*

Cross back over the river via the Pont Bercy, or walk a little further along the quay to the [Cité de la Mode et du Design](#) which has strong 1970's crime drama vibes as well as some thoughtful graffiti art (see black route on map) (13).



*Cité de la Mode et du Design*

If so, cross over the Pont Charles de Gaulle instead which allows you to get a better view of the including the Cité de la Mode et du Design's green blob-based makeover and back to the train station.